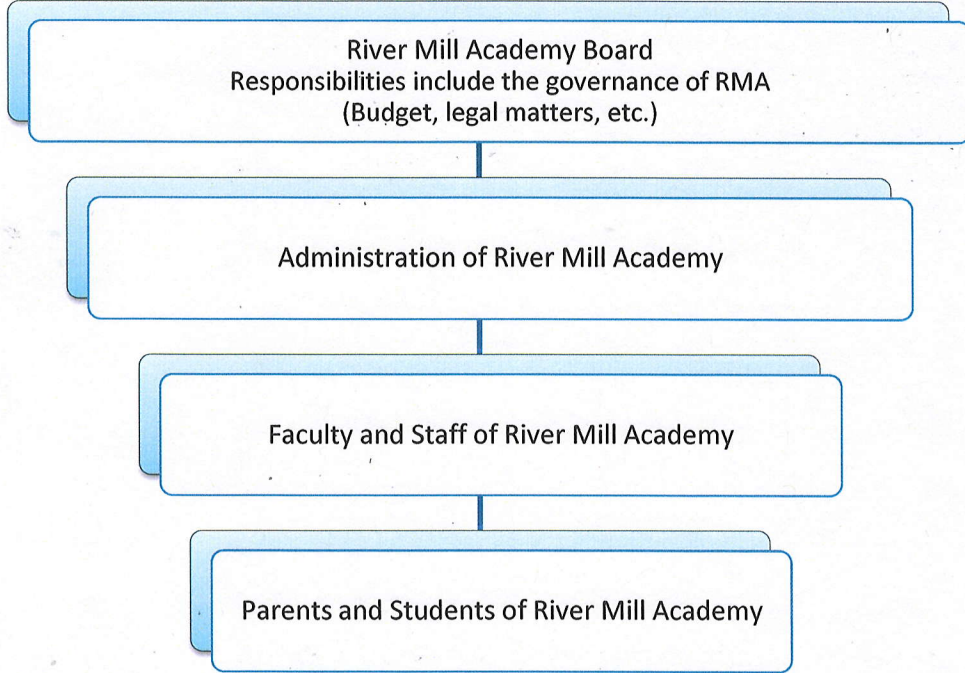


PARENTAL CONCERNS (CHAIN OF COMMAND) rev 1

For every organization to run effectively there needs to be a chain of command. Listed below is the chain of command for River Mill Academy.



The teacher should first handle parental concerns. In the event that the concern is not resolved following this intervention, the Principal will intercede. The Principal may choose to take the concern to the RMA Board in order to resolve the situation. Teachers should remind parents to follow the proper chain of command when dealing with school policy. The Grievance Policy for parents and students is included in the Student Handbook.

Parental Concerns- REV. 1

Approved by River Mill Academy Board of Directors


Chairperson

5-16-2017
Date