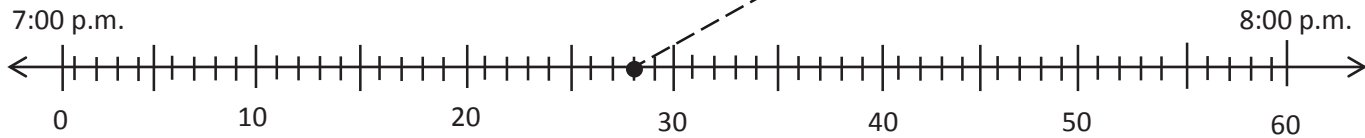
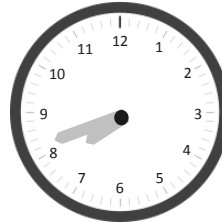
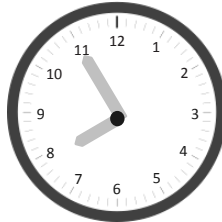
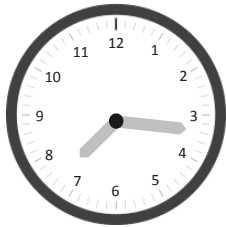


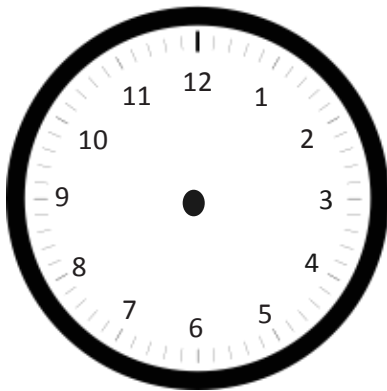
Name _____

Date _____

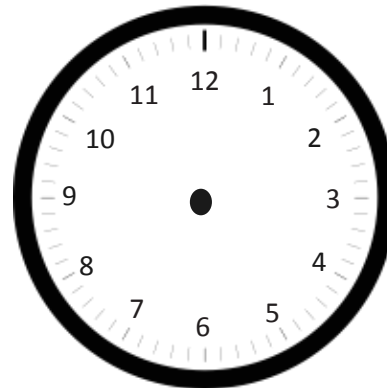
1. Plot a point on the number line for the times shown on the clocks below. Then, draw a line to match the clocks to the points.



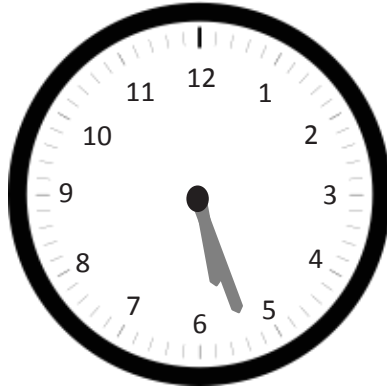
2. Jessie woke up this morning at 6:48 a.m. Draw hands on the clock below to show what time Jessie woke up.



3. Mrs. Barnes starts teaching math at 8:23 a.m. Draw hands on the clock below to show what time Mrs. Barnes starts teaching math.

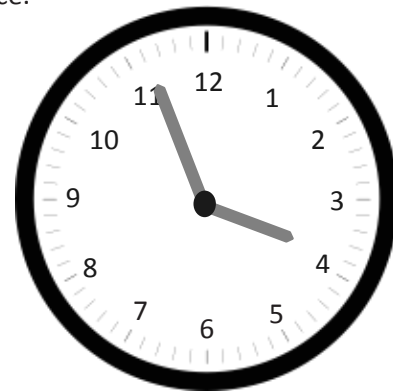


4. The clock shows what time Rebecca finishes her homework. What time does Rebecca finish her homework?



Rebecca finishes her homework at _____.

5. The clock below shows what time Mason's mom drops him off for practice.
- a. What time does Mason's mom drop him off?



- b. Mason's coach arrived 11 minutes before Mason. What time did Mason's coach arrive?